

2014
Tribeca



Love. It's what makes a Subaru, a Subaru.

 **SUBARU**
Confidence in Motion

Room for all the memories
you can create.



The 2014 **Subaru Tribeca**

You'll always remember the little things. The perfect restaurant you found in that tiny town. Ice cream victory celebrations with the kids. Sundays at the park with the dog. Fortunately, your Tribeca is built to help them all happen, with a refined and comfortable cabin for up to seven, and storage for all your belongings. And because no two road conditions are ever the same, the Subaru Symmetrical All-Wheel Drive system sends power to all wheels for maximum control and to deliver a responsive drive. Wherever you're headed, time spent together will be the time of your life.

Tribeca 3.6R Limited in Ice Silver Metallic.



Versatile

Every journey requires its own cargo, and that's why Tribeca offers all kinds of smart ways to pack, store and secure it, including a 3-way, split-sliding second row.



Responsive

The balance, responsiveness and smooth ride found in the Tribeca is rarely seen in other CUVs, thanks to its SUBARU BOXER® engine, AWD and well-tuned suspension. The combination of these features make for a punchy and safer ride around town.



Comfortable

With three rows of roomy seating, flexible design for cargo capacity and thoughtful extras like 10 cup holders, the Tribeca has a comfortable place for everyone and everything.



Protective

Tribeca safety features include impressive active and passive safety systems making it—in a worst-case scenario—one of your best possible bets.

“Subaru has racked up more endorsements
by independent arbiters of automotive quality and safety
than just about any other manufacturer.”¹

—*FORTUNE Magazine*, December 3, 2012

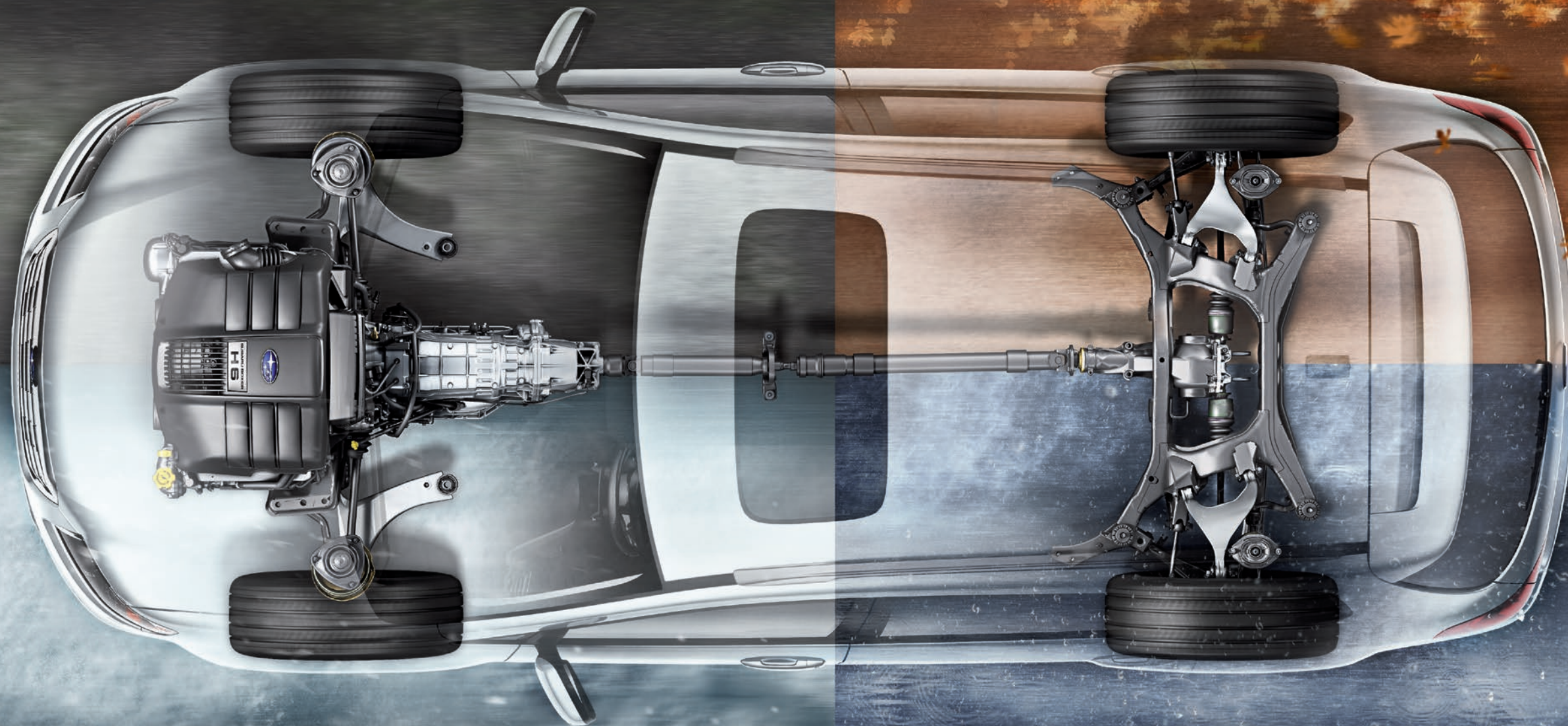


Quicker Response

There are only four small patches of rubber that keep you in control of your vehicle. The more your tires are engaged the more control you have. Subaru Tribeca has an AWD system that keeps more power routed to all four tires than some other AWD systems that only fully engage as a reaction to slippage that has already occurred.

Better Balance

Every Tribeca is built for AWD from the ground up. This allows us to build a balanced, symmetrical drivetrain that is free of the extra components some other systems need to get power to all four wheels. This symmetry and balance means stability that helps make driving your Tribeca safer and agility that makes it more fun.



All wheels. All roads. All the time.

Subaru Symmetrical All-Wheel Drive

Wherever, whenever, or however you drive, control and confidence come from one place—where your tires meet the road. Subaru has spent more than 40 years developing a system to get the most of those few points of contact, for traction and control that will help you feel empowered on rough roads and in bad weather. A system that can make smooth roads more engaging, and can help you avoid danger with greater confidence. Discover the balance and stability that Subaru Symmetrical All-Wheel Drive delivers, knowing that your Subaru is ready to get you out there—wherever that may be.

Efficient Design

Because power in some AWD systems must route through extra components, these systems not only sacrifice efficiency, but also can incur more wear and tear. The AWD in Tribeca routes power directly from the engine to all four wheels to keep components—and frictional power losses—to a minimum.

Low profile. Big difference.

Subaru Boxer Engine

Better engines start with better ideas. That's why we think about engines a little differently. And it's why every Subaru is powered by the SUBARU BOXER® engine. It features a unique horizontally opposed design and symmetrical layout. The design advantages it has over "V" or inline engines means it provides powerful, yet smooth acceleration, while at the same time it helps create a more stable and balanced vehicle. It's an insightful difference that has the power to make driving more engaging.



Horizontally Opposed Design

The pistons move in 180-degree opposition to each other on a horizontal plane, so each naturally cancels out the vibration of the piston opposite it. >>

Durable Construction

The engine's flat design is inherently rigid, and reduces the amount of vibration that "V" or inline engines—with more upright pistons—are subjected to during operation. >>

Lower Center of Gravity

The flatter profile and perfectly symmetrical design of the engine block, and the fact that it sits lower in the chassis, make the overall vehicle feel more balanced and nimble versus other designs. >>

Smoother Operation

Step on the accelerator and the revs come on smooth without the extra engineering other engines require. It's comfortable and controlled, with plenty of power when you need it. >>

Increased Durability

An engine subjected to less vibration lasts longer. It's no wonder 96% of Subaru vehicles built in the last 12 years are still on the road today.¹ >>

¹ Based on Polk U.S. Vehicles in Operation registration information for MY2001–2013 as of January 2013.

Greater Agility

The vehicle responds more quickly to changes in direction, which gives a feeling of tightness in turns. And it's more likely to feel stable during maneuvers, giving you an increased feeling of being in control at all times. >>

Dream big.
There's room for that, too.

Flexible Second Row

Your needs and the needs of those you take with you have a way of changing all the time. The Tribeca is ready to adapt to your life with features like the 40/20/40-split second row. Its seatback splits three ways, so you can seat three across, or fold down one or two of the seatbacks to carry longer items in the cargo area. And to help accommodate varying passenger needs—from infants who need to be within easy reach, to adults who want all the legroom possible—the second row slides almost eight inches forward and backward, and also reclines for comfort.



10 Cup Holders

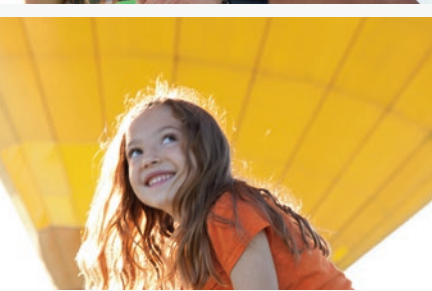
There's no need to cry over spilled anything with 10 cup holders to choose from. Every seat has one within reach. There are two in the center console, one in every door, two in the second-row armrest. And even those in the back aren't left out with two on each side of the third row. You'll also find a variety of conveniently placed storage compartments throughout the interior—helping you carry what you need while cutting down on clutter.

Standard Third-row Seating

With a split-folding third-row seat, standard on every Tribeca, there's room for up to seven passengers, making it family-friendly and comfortable. And with the thoughtful design of the third row allowing you to neatly fold down one or both of the seats, you've got easy access to more than 37 cubic feet of cargo space. And because you can access the last row from both sides of the Tribeca, getting to it and your cargo is always easy.

74.4 cu. ft. Cargo Space

Many SUVs offer a spacious interior. But the Tribeca fills that space with innovations and designs that are simply smart. Every square inch of the elegant interior is maximized with distinctive features thoughtfully placed, and ingenious configurations that mean just about everyone and everything fits. The flexible design lets you conveniently fold all the seats down, creating a cargo area with 74.4 cubic feet of space. With this much space, you won't ever have to leave anyone or anything behind.





Comfortable, connected
and entertained.

Tribeca 3.6R Limited with Slate Gray Leather and optional equipment.

Interior Features

The Tribeca has a wealth of standard features designed to give you the comfort and control to make every drive more rewarding. It's easy to find the perfect driving position with the 8-way adjustable power driver's seat with 2-position memory. And steering wheel-mounted controls keep key vehicle settings within easy reach. You'll quickly find your destination with the available touch-screen navigation system, which will also provide you with points of interest along the way. For even greater convenience, Bluetooth® hands-free connectivity is standard. This feature allows you to pair a Bluetooth®-enabled phone, and make your calls with voice commands.



Entertainment System

With the right tunes, every drive will inspire. Tribeca is available with the stunning sounds of a Harman Kardon premium audio system, featuring 10 speakers for optimum clarity, impact and harmonic richness. Powering the system is a 385-watt amplifier built and custom-tuned by Harman Kardon. Choose from a variety of audio sources, including an available 6-disc CD changer, SiriusXM® Satellite Radio¹, or an auxiliary jack that you can plug your iPod® or MP3 player into. And with the available rear-seat DVD entertainment system at your disposal, even the longest journeys can seem like short trips.

¹ Activation and monthly subscription sold separately. See your dealer.



Convenience Features

Available with features like the auto-dimming rearview mirror with integrated back-up camera, leather-wrapped, 3-spoke steering wheel with audio controls, overhead console with dual maplights, and a HomeLink® remote transmitter with three memory settings, the Tribeca makes it easier to stay comfortable and connected to the things that matter most.



Tribeca 3.6R Limited with Desert Beige Leather and optional equipment.

Your kids grow quickly,
but don't worry—we made space.

A distinctive and intelligent approach to seating and trouble-free flexibility are just two of the reasons Tribeca is a great choice for growing families. The 8-way power driver's seat and 4-way power front-passenger's seat, both with adjustable lumbar support, allow for a customized and comfortable ride. The smart seating and storage systems include 40/20/40-split flat-folding second-row seatbacks, 50/50-split flat-folding third-row seatbacks and enclosed storage compartments with a rear storage drawer for all of the extra things life brings. Fold the seats into the floor and the flat cargo floor area offers 74.4 cubic feet of cargo room to accommodate the bigger things in life just as well as the little ones.



Supporting Partners That Care

Subaru has spent decades building relationships with dozens of organizations that believe in building a cleaner, greener and more hopeful world as much as we do. After five years of the Share the Love sales event, Subaru has donated nearly \$25 million dollars. This year's participating charities included the Alzheimer's Association®, ASPCA®, Make-A-Wish®, Meals on Wheels Association of America® and USO. We're thrilled that we've been able to help such deserving causes and are grateful to our owners for helping us make this event a success year after year.

Building Cars That Last

Life is too important to slow down with a car you can't rely on. That's why we build each of our vehicles with the highest standards of manufacturing, with designs that are inherently tough, and with engineering that can keep you going—all with quality and consistency. This commitment is why 96% of all the vehicles we've built in the last 12 years are still on the road today! It's also why Subaru vehicles keep their value so well.

¹ Based on Polk U.S. Vehicles in Operation registration information for MY2001–2013 as of January 2013.



Protecting Your Investment

Once you're part of our family, we'll be there for you. Every Subaru comes with 24-hour roadside assistance for 3 years or 36,000 miles. If you have trouble on the road, a tow to the nearest Subaru dealership and other services are just a phone call away. And to protect you over the long haul, we offer Added Security®—extended service agreements and maintenance plans that will help protect your car for up to 7 years or 100,000 miles. Added Security® offers the only mechanical and maintenance plans backed by Subaru, and because we've been backing them for more than 30 years, they're agreements you can trust. Your dealer has full coverage details.

Ensuring You're Fully Covered

We know you love your Subaru, but sometimes accidents happen. Subaru Equity Shield® GAP could help you avoid further sorrow by paying all or most of a possible difference between what your insurance company covers for your Subaru that was totaled, or stolen and not recovered, and what you still owe in payments. It will even cover your deductible for up to \$1,000! Also, being part of the Subaru family may save you money on some types of insurance, such as auto and homeowners. Subaru owners may be eligible for exclusive rates through Subaru Advantage Insurance by Liberty Mutual. Find out more at subaru.com/owners/ownership-benefits.html.

¹ Not applicable in Alaska.

Circumstances don't make a Subaru, they reveal it.

"The Subaru Tribeca has been named an IIHS Top Safety Pick, seven years running (2007–2013)."¹

—Insurance Institute for Highway Safety (IIHS)



Subaru Active and Passive Safety

When it comes to feeling confident, nothing is more important than feeling safe. That's why Subaru places safety as one of our highest priorities, and why we think about safety in 360 degrees. First, we engineer our vehicles with exceptional control and advanced accident-avoidance technologies to help keep accidents from happening in the first place. Then, we build every Subaru with protection technologies that help keep danger out, while helping to keep those inside safe. The end result is a car that—in a worst-case scenario—is one of your best possible bets.



Stopping Power

Powerful and reliable vented disc brakes are teamed with advanced technology to help you stop short of danger. Antilock brakes help make sure you don't lose traction, and the advanced Brake Assist system helps ensure maximum pressure is applied to the brakes as quickly as possible in an emergency situation.

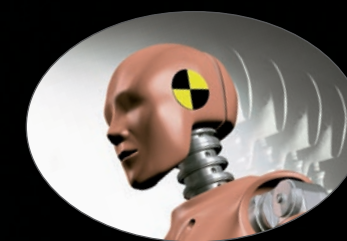
Increased Awareness

Before you can avoid danger, you have to see it coming. Not only is the Tribeca designed for excellent visibility on all sides, it's also available with a back-up camera. The optional Rear-Vision Camera, with available 3.3-inch display located conveniently in the rearview mirror, gives you a clear view behind you. Upgrade to the navigation system and you'll have a 7-inch, in-dash display.



Exceptional Control

Safety begins with avoidance. The traction and balance of Subaru Symmetrical All-Wheel Drive and the stability of the SUBARU BOXER® engine provide you with the outstanding control you need to react to hazards. Every Tribeca also comes with standard VDC electronic stability control, which can detect a loss of control and intervene to help keep you on your intended path.



All-around Protection

Our Ring-shaped Reinforcement Frame is exceptionally strong for maximum resistance to impact energy, while its unique configuration helps divert that energy away from occupants. To further help prevent injury, an array of sensors, including a rollover sensor, can detect an impending crash and deploy front, front-side and side-curtain airbags²—working to surround and cushion outboard occupants.

¹ Ratings based on Insurance Institute for Highway Safety's (IIHS's) 40-mile-per-hour moderate overlap frontal crash test, 31-mile-per-hour side-impact test, 20-mile-per-hour rear-impact test, and roof-strength test. For more information, contact IIHS or visit their website at www.iihs.org.

² Always wear seatbelts. Children should be properly restrained in the rear seat.



Nowhere to be.
Just new places to go.

3.6R Limited



- 256-hp 3.6-liter 6-cylinder SUBARU BOXER® engine
- Subaru Symmetrical All-Wheel Drive
- 5-speed automatic transmission
- 18-inch 5-dual-spoke aluminum-alloy wheels
- Fog lights
- Leather-trimmed upholstery
- 8-way power adjustable driver's seat. 4-way power adjustable front-passenger's seat.
- 2-position driver's seat memory
- Dual-zone automatic climate control system
- All-Weather Package
- Harman Kardon 6-CD audio system
- Bluetooth® hands-free phone connectivity
- HomeLink® remote transmitter with three memory settings
- Power Moonroof Package

3.6R Limited

ENGINE AND DRIVETRAIN

Engine	3.6-liter DOHC aluminum-alloy 24-valve 6-cylinder horizontally opposed SUBARU BOXER® engine with Dual Active Valve Control System.
Power	256 hp @ 6,000 rpm
Torque	247 lb-ft @ 4,400 rpm
Transmission	Standard 5-speed adaptive electronic direct-control automatic with manual shift control
CA Emissions	Certified Low Emission Vehicle (LEV2 LDT2)

TRACTION AND STABILITY

Symmetrical All-Wheel Drive	Standard
Vehicle Dynamics Control (VDC)	VDC electronic stability control utilizes sensors which constantly monitor wheel speeds, steering angle, brake pressure, vehicle yaw rate and lateral g-forces. If VDC detects a difference between the driver's intended path and the one the vehicle is actually taking, VDC applies braking power and/or reduces engine torque to help correct vehicle path.
Traction Control System (TCS)	VDC also incorporates an all-wheel, all-speed traction control system which senses a loss of traction and applies braking force to the slipping wheel or wheels as necessary to maintain vehicle motion.

FUEL

Fuel economy (city/highway/combined) ¹	16/21/18 mpg
Fuel requirement	Unleaded gasoline (87 octane)
Fuel capacity	16.9 gallons

CHASSIS

Steering	Power-assisted rack-and-pinion. Turning circle: 37.4 feet.
Suspension	4-wheel independent suspension. Front: Strut-type with lower L-arm. Stabilizer bar. Rear: Double wishbone. Stabilizer bar.
Brakes	4-wheel disc, ventilated front. 4-channel, 4-sensor ABS with Electronic Brake-force Distribution (EBD).
Brake discs (front/rear)	Front: 12.4 inches/ Rear: 12.6 inches
Brake Assist	When emergency braking is detected by how quickly the brake pedal is pressed, maximum brake pressure is immediately applied.
Brake Override System	If both brake and accelerator pedals are pressed simultaneously, the system reduces the operation of the accelerator pedal to help prevent unintentional vehicle acceleration.

WHEELS AND TIRES

Wheels	18 x 8.0-inch 5-dual-spoke aluminum alloy
Tires	255/55 R18 104H all-season

EXTERIOR AND INTERIOR DIMENSIONS

Length/Width/Height	191.5 inches/73.9 inches (88.8 inches with side mirrors)/66.4 inches (67.7 inches with roof rails)
Wheelbase	108.2 inches
Track (front/rear)	62.2 inches/62.1 inches
Headroom (front/2nd row/3rd row)	40.3 inches/38.2 inches/36.2 inches (38.9 inches/38.2 inches/36.2 inches with moonroof)
Legroom (front/2nd row/3rd row)	42.3 inches/34.3 inches/30.9 inches
Shoulder room (front/2nd row/3rd row)	58.1 inches/57.5 inches/51.3 inches
Passenger volume	133.5 cubic feet
Cargo volume	37.6 cubic feet with 2nd-row seats raised/8.3 cubic feet with 2nd- and 3rd-row seats raised
Maximum cargo volume	74.4 cubic feet with 2nd- and 3rd-row seats lowered
Base curb weight	4,214 lbs
Towing capacity	3,500 lbs ²

Protecting Your Investment

Once you're part of our family, we'll be there for you. Every Subaru comes with 24-hour roadside assistance for 3 years or 36,000 miles. If you have trouble on the road, a tow to the nearest Subaru dealership and other services are just a phone call away. And to protect you over the long haul, we offer Added Security®—extended service agreements and maintenance plans that will help protect your car for up to 7 years or 100,000 miles. They're the only mechanical and maintenance plans backed by Subaru, and because we've been backing them for more than 30 years, they're agreements you can trust. Your dealer has full coverage details.

Warranties

New Car Limited Warranty	3 years or 36,000 miles, whichever comes first.
Powertrain Limited Warranty	5 years or 60,000 miles, whichever comes first.
Wear Item Limited Warranty	3 years or 36,000 miles, whichever comes first. Repairs to the following items will also be covered under Wear Item Limited Warranty: • Brake Pads • Wiper Blades • Clutch Linings • Transmitter Batteries
Rust Perforation Limited Warranty	5 years, unlimited mileage.

EXTERIOR	3.6R Limited
Projector low-beam and multireflector high-beam headlights	●
Fog lights	●
Chrome-finished door handles	●
Body-color power mirrors with integrated turn signals	●
Heated side mirrors and windshield wiper de-icer (All-Weather Package)	●
Power tilt/sliding-glass moonroof (99% UV light reducing)	●
Privacy glass for rear doors, rear quarters and rear gate	●
Raised roof rails, black finish. 150 lbs maximum capacity.	●

SEATING AND TRIM	
8-way power driver's seat and 4-way power front-passenger's seat, both with manually adjustable lumbar support	●
3-stage heated front seats (All-Weather Package)	●
2-position driver's seat memory	●
60/40-split sliding and reclining 2nd-row seats with 7.8-inch fore/aft travel and driver/passenger-side tip-forward/slide function for 3rd-row entry/exit	●
40/20/40-split flat-folding 2nd-row seatbacks. 50/50-split flat-folding 3rd-row seatbacks.	●
Leather-wrapped shifter handle	●
Leather-trimmed upholstery	●
Silver metallic trim on dashboard, doors and center console	●

CONVENIENCE FEATURES	
Auto-dimming rearview mirror with integrated back-up camera in 3.3-inch display	●
Power front and rear windows with driver's auto-down	●
Leather-wrapped 3-spoke steering wheel with audio system buttons	●
Center console with armrest, enclosed storage compartment and rear storage drawer	●
10 cup holders	●
Bluetooth® hands-free phone module	●
HomeLink® remote transmitter with three memory settings	●
Dual 12-volt power outlets in center console storage compartment. Dual 12-volt power outlets in cargo area.	●
Cargo-area underfloor storage	●
4 cargo-area tie-down hooks and dual cargo-area grocery hooks	●
Rear-Vision Camera	○

AUDIO SYSTEM	
385-watt 10-speaker Harman Kardon 6-CD audio system with amplifier, subwoofer, SiriusXM® Satellite Radio ³ and 3.5-mm auxiliary jack	●

INSTRUMENTATION	
Analog speedometer and tachometer with illuminated red needles on black faces and white indicators	●
Digital coolant temperature and fuel gauges. Digital odometer and automatic transmission shift-position indicator.	●

CLIMATE CONTROL	
Dual-zone automatic climate control system with air filtration and controls for temperature, 6-speed fan, airflow direction, automatic mode and CFC-free air conditioning	●
Rear cabin air conditioner with 4-speed fan	●

SECURITY	
Keyless entry system with tailgate unlock and answer-back electronic chirp	●
Antitheft security system with engine immobilizer	●

SAFETY	3.6R Limited
ACTIVE	
Subaru Symmetrical All-Wheel Drive	●
SUBARU BOXER® engine	●
4-wheel Antilock Braking System (ABS) with Electronic Brake-force Distribution (EBD)	●
Vehicle Dynamics Control (VDC)	●
Traction Control System (TCS)	●
Brake Assist	●
Tire Pressure Monitoring System (TPMS)	●
Daytime Running Lights (DRL)	●
Brake Override System	●

PASSIVE	
Dual-stage deployment driver's and front-passenger's front airbags (SRS) ⁴	●
Subaru advanced frontal airbag system ⁴	●
Side-curtain airbags protecting front and outboard 2nd-row occupants (SRS) ⁴	●
Seat-mounted front side-impact airbags (SRS) ⁴	●
Height-adjustable active front-seat head restraints	●
Three individual height-adjustable 2nd-row headrests. Two individual height-adjustable 3rd-row headrests.	●
3-point height-adjustable outboard 2nd-row and fixed 2nd-row center seatbelts. 3-point fixed 3rd-row rear seatbelts.	●
Emergency Locking Retractors at all seating positions	●
Rear child-safety door locks. LATCH system: Lower Anchors and Tethers for Children.	●
Rollover sensor (SRS) ⁴	●

OPTIONAL EQUIPMENT	
Navigation System and Rear Seat Entertainment System: Touch-screen GPS navigation system with multifunction screen, displaying Rear-Vision Camera, audio system information, trip computer functions and vehicle settings. Rear-seat DVD entertainment system (RSES) with 9-inch widescreen format, 2 wireless headsets, wireless remote, and auxiliary inputs for game console, video camera or other multimedia device. Video input from RSES may also be displayed on in-dash screen (with vehicle in Park).	○

● Standard ○ Optional

¹ 2014 EPA fuel economy estimates. Actual mileage may vary. ² With accessory transmission oil cooler. ³ SiriusXM® Satellite Radio hardware standard as part of Harman Kardon audio system. Activation and required monthly subscription sold separately. Includes 4-month trial subscription. See your dealer. ⁴ The Supplemental Restraint System (SRS) (airbags) affords the driver and front passenger additional protection in moderate to severe frontal and side-impact collisions, and outboard 2nd-row passengers additional protection in moderate to severe side-impact collisions. This system provides supplemental protection only, and seatbelts must be worn in order to avoid injuries to out-of-position occupants upon airbag deployment and to provide the best combined protection in a serious accident. Children should always be properly restrained in the rear seat.

Some images shown are for illustration purposes only. Specifications in this brochure are based on the latest product information available at the time of publication. For the most up-to-date product information, log on to subaru.com. Some equipment shown in photography in this brochure is optional at extra cost. Specific options may be available only in combination with other options. Specific combinations of equipment or features may vary from time to time and by geographic area. Certain accessories and equipment may not be available at the time of publication. Subaru of America, Inc., reserves the right to change or discontinue at any time, without notice, prices, colors, materials, equipment, accessories, specifications, models and packages without incurring any obligation to make the same or similar changes on vehicles previously sold. Colors shown may vary due to differences in monitors and/or screen settings.

This brochure was prepared by Subaru of America, Inc. A warranty from Subaru of America, Inc., is available only on cars sold to the first retail purchaser through an authorized Subaru dealer in the continental U.S. or Alaska. Subaru, SUBARU BOXER, Added Security, Equity Shield and Tribeca are registered trademarks. Confidence in Motion is a trademark of Fuji Heavy Industries, Ltd. SiriusXM is a registered trademark of SiriusXM Radio Inc. iPod is a registered trademark of Apple Inc. Harman Kardon is a registered trademark of Harman International Industries, Incorporated. HomeLink is a registered trademark of Prince Corporation, a wholly-owned subsidiary of Johnson Controls. Bluetooth is a registered trademark of Bluetooth SIG, Inc. For more information, contact your Subaru dealer or log on to subaru.com.

Make your Tribeca truly yours.



All-weather Floor Mats

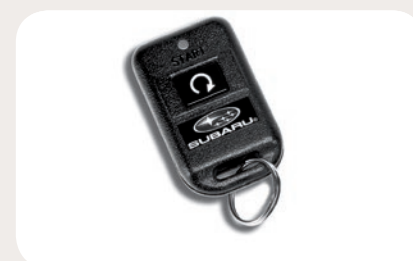
Custom-fitted, heavy-gauge, protective mats. Help protect vehicle's carpet from sand, dirt and moisture.

Not intended for use on top of carpeted floor mats.



Moonroof Air Deflector

This air deflector helps reduce wind noise and cut sun glare.



Remote Engine Starter

Conveniently allows vehicle to start by remote control (up to 400 feet away depending on obstructions), so that the vehicle's interior temperature is more comfortable upon entry.



Front Bumper Underguard

Adding a touch of style to a rugged profile, the front bumper underguard protects the lower bumper area from brush and debris.



Trailer Hitch

When your toys are too big to fit inside, the Trailer Hitch may be what you need. Rated at 350 lbs tongue weight and 2,000 lbs towing capacity (3,500 lbs with addition of accessory Transmission Oil Cooler).

Hitch ball not included. Trailer brakes may be needed.



Puddle Lights

L.E.D. lights mounted in the rocker panel trim turn on when the vehicle doors are unlocked using the keyless entry and illuminate the ground to aid entering and exiting the vehicle.



Cargo Net – Rear

Neatly holds cargo and prevents it from sliding around while the vehicle is in motion.



18-inch, Chrome-finished Alloy Wheels

Ride even more stylishly with these 18-inch, chrome-finished alloy wheels.



Hood Protector

The hood protector is made from a durable acrylic material that helps shield the hood from bugs and stone chips.



Kayak Carrier

Cradles and securely transports most kayak hull shapes. Includes tie-down straps with padded buckles.

Required mounting clamps sold separately. Shown with accessory Round Cross Bars, also sold separately.



Dog Guard/Compartment Separator

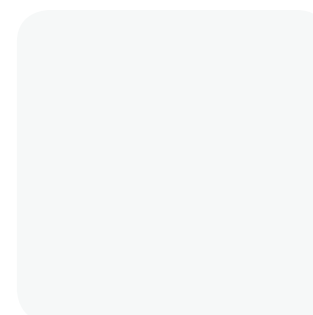
Provides a divider between your cargo or pet and the passenger area of the Tribeca.



Rear Bumper Cover

Helps protect upper surface of rear bumper from scratches and dings.

Paint



Satin White Pearl



Ice Silver Metallic



Venetian Red Pearl



Deep Indigo Pearl



Carbide Gray Metallic



Crystal Black Silica

Upholstery



Slate Gray Leather (SGL)



Desert Beige Leather (DBL)

Color Combinations

3.6R LIMITED


Satin White Pearl	DBL
Ice Silver Metallic	SGL
Venetian Red Pearl	SGL
Deep Indigo Pearl	DBL
Carbide Gray Metallic	SGL
Crystal Black Silica	DBL

Responsible. Reliable. Ready to join the family.

At Subaru, we're committed to building a lasting, rewarding relationship with you and the world we share. We start by building our vehicles to last—it's why 96% of all vehicles we've built in the last 12 years are still on the road today.¹ We also share your desire for a cleaner, greener world. That's why in 2004, Subaru of Indiana Automotive, Inc., (SIA) became the first manufacturing facility in the U.S. to reach zero-landfill status—nothing from its manufacturing efforts ever goes into a landfill. Also Subaru is headquartered in a zero-landfill office in Cherry Hill, NJ.

¹ Based on Polk U.S. Vehicles in Operation registration information for MY2001–2013 as of January 2013.



 Find out more about our efforts to keep it cleaner and greener.
subaru.com/environment

 **SUBARU**
Confidence in Motion